



2024-2025

Mrs. Fisher

PERIOD 1 CO-TEACH: Mrs. Caldwell

PERIOD 8 CO-TEACH: Mrs. Martin

Communicate

845-373-4100

sherry.fisher@webutuck.org

ashlee.caldwell@webutuck.org

sarah.martin@webutuck.org

Period 1 @ela11hfish1

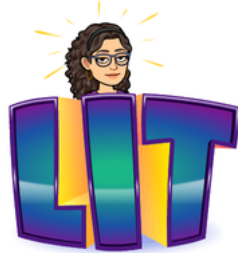
Period 8 @ela11hfish8

Course Description

ELA 11 continues to develop students' skills in analyzing complex literary and informational texts as students delve deeply into works by acclaimed authors and historical figures. Through the study of a variety of text types and media, students build knowledge, analyze ideas, delineate arguments, and develop writing, collaboration, and communication skills, all culminating with the NYS ELA 11th Grade Regents Exam.

Units of Study

- The Short Story: What makes good writing?
- *The Crucible*: Hysteria and Hypocrisy
- *Hamlet*: Depression and Revenge
- Revolutionary Rhetoric (non-fiction)
- Poetry: How does a poet's choices impact the power and beauty of the poem?
- The Research Paper: Solving World Problems
- Outside Reading



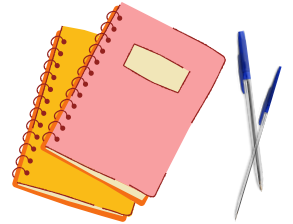
Materials

REQUIRED:

- a charged, school-issued Chromebook
- a notebook—choose either a section in a 3 Ring binder or a single subject spiral bound with perforated margins and a folder
- blue or black pens (please, no “fru-fru” colors)

OPTIONAL:

- earphones
- highlighters
- post-it notes any size
- colored pencils



E } ready
B } responsible
 } respectful
 } safe

- Daily attendance is expected and required.
- Students must take care of all matters that are of a personal nature *before* coming to class. This includes locker, bathroom, water fountain, phone calls, sports-related issues and so on.
- Students must be on time each day and equipped with the work and text currently assigned, a charged Chromebook, a notebook dedicated to English and/or a folder, and a *functional* writing implement.

- Students will conduct themselves in an appropriate manner by refraining from using rude gestures, swearing, or put-downs; and observing appropriate group discussion etiquette.
- Students should keep their hands, feet, books, and materials to themselves at all times. Please do not touch or handle anything in the classroom that is not yours.
- Students who cannot abide by these expectations will minimally incur a lower participation grade for the day as well as possible disciplinary action, to include detention or suspension.





Technology

- Cell phones should be silenced and put away upon entering the classroom. Texting, email or other social media use is not permitted during class.
- Chromebooks must come to class charged daily; do not ask permission to borrow one from the library--go before class.
- Earphones for MUSIC are rarely allowed and, contrary to popular opinion, they do not help you concentrate better--DON'T ask.

The following codes may appear in the gradebook:

EX = excused/exempt *
L = late
D = done
ND = not done +
A = absent +
M = modified assignment

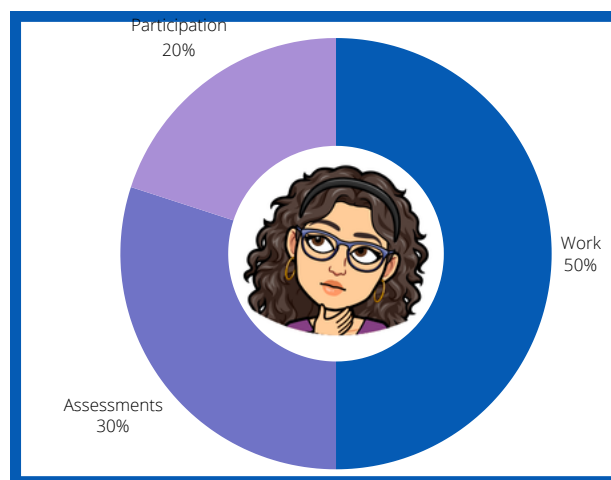
*assignment is not calculated
+ assignment counts as a 0

Grades:

Participation is defined as the physical presence of the student in the class as well as the student's engagement with the curriculum. A participation grade is based upon observance of general classroom expectations and includes the following criteria: presence for the total class in order to be exposed to the curriculum; preparation and materials for the day's lesson; willingness to be involved with classmates and the curriculum; appropriateness of comments, behavior, and materials; and restraint from using technology devices in an inappropriate manner.

Class and homework are essential to success and will be assigned regularly; contrary to popular belief, it will not kill you!

- Vocabulary instruction is embedded into the curriculum. It's a known fact that the better the vocabulary, the better the comprehension.
- Specific grammatical concepts we will focus on include review of phrases, clauses, and sentence types, as well as hyphens, complex syntax, and complex word usage.
- A Quick Write is a literacy strategy aimed at developing writing fluency, building the habit of reflection into a learning experience, and informally assessing student thinking; they will be used consistently throughout the year in a variety of capacities.



A variety of **performance assessments** will be administered throughout the school year. Assessments will always be announced in advance and therefore not accepted late.

- Quizzes will not be necessarily announced; therefore, it is of utmost importance that work is completed on time.
- Quick Writes may be counted on occasion as an assessment, for which students will be explicitly made aware of.
- Extended Responses and Essays, which will utilize the writing process, will be graded according to an adaptable rubric that addresses content, style, and mechanics; this will be weighted heavier than other assignments.

Missed/Late Work:

- Generally, all assignments are expected to be turned in on time. Regardless of the reason for the absence, students are ultimately responsible for ALL missed work. "I didn't know" is not an acceptable excuse. Students have a variety of ways (e.g.--Google Classroom, email, and Remind) to stay connected and are expected to do so.
- Reading assignments are expected to be completed before the start of the next class; other assignments will not be accepted a week after the due date and may receive reduced or minimum credit. Work that is "gone over" in class will not be accepted for *any* reason. Please note that any work that is missing at the time grades are entered into the grade book will be automatically recorded as a zero until it is made up, if that is possible.
- It is up to teacher discretion to give a "make-up;" however, make-ups WILL NOT be granted to students who cut class or who have to be removed from class for a disciplinary reason on the day of an assessment. In such cases, a ZERO will be given for that assessment.

Plagiarism/Cheating

This class is specifically a place for learning and practicing invaluable reading and writing skills. To circumvent this necessary practice is to willfully engage in dishonest habits that can ultimately affect your grade and compromise your academic integrity. Therefore, AI-generated text and "Googled" or shared answers will be considered cheating and be subject to academic discipline. Become familiar with the WHS Plagiarism Policy.

Extra Help

Extra help opportunities will be posted weekly and will during and after school options.